

# QuantaCell v2

Automated cell counter

User Guide

## Table of contents

1. Introduction
2. Step-by-Step Usage
3. Help and Support

## 1. Introduction

QuantaCell 2.0 is an automated cell counter. QuantaCell 2.0 has a processor that can analyze and count cells without being dependent on a computer. In this way, counting and vitality analysis were performed without the need for any computer, and the usage areas of the device were wider.

## 2. Step-by-Step Usage

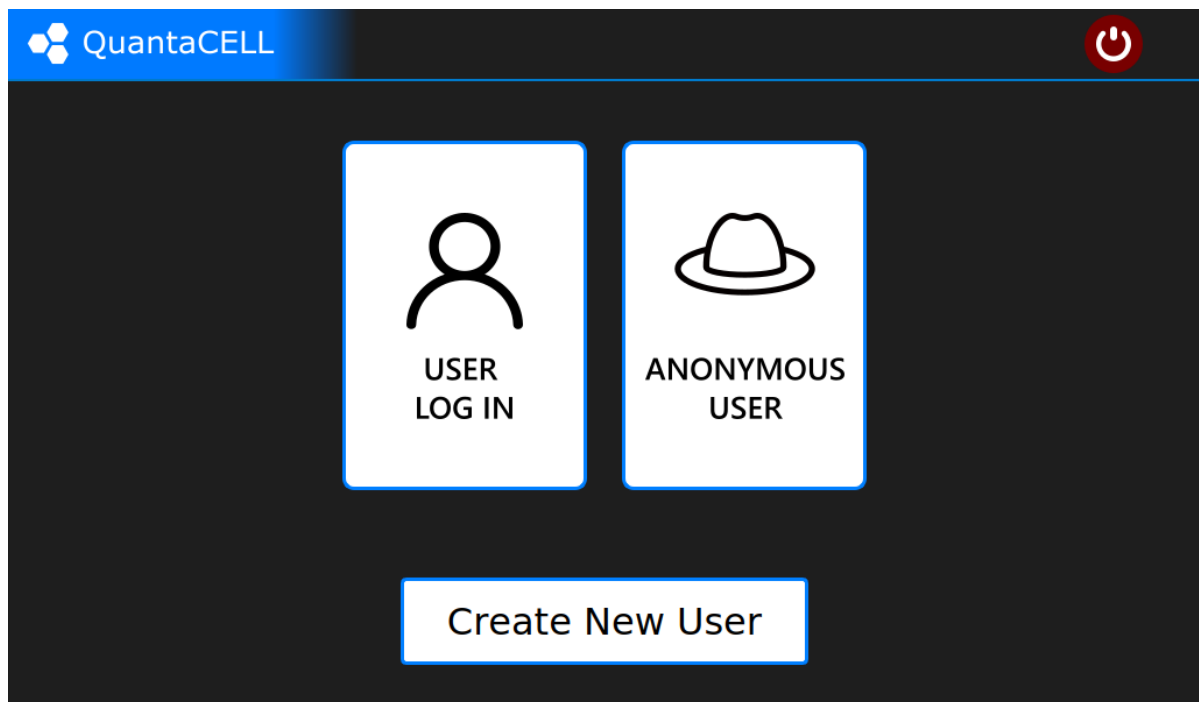
### Usage summary

- a) Device Connection: Connect your QuantaCell v2 to the power source.
- b) System Initialization: Power on QuantaCell v2 from the power button. Initially, the device may need to boot for a while. When this process is complete, the device will display the start screen.
- c) Interface: On the device start screen, you will see a menu displaying the user interface. Control the screen with your finger on the touchscreen. Follow the instructions to perform the desired action.
- d) Cell Count: Select "Cell Count" to start the cell counting process. Prepare the desired cell sample and place it on the sample well or slide. Start cell counting by following the instrument's instructions. The analysis process will start. The results will be displayed on the screen.
- e) Results Analysis: When cell counting is complete, observe the printouts to analyze the results. Evaluate statistics or visual data provided by the device. Use appropriate methods to report or record relevant information.
- f) Turning Off the Device: After the cell counting process is complete, turn off the device with the power button. Safely remove the connections and store the device properly.

For usage video:

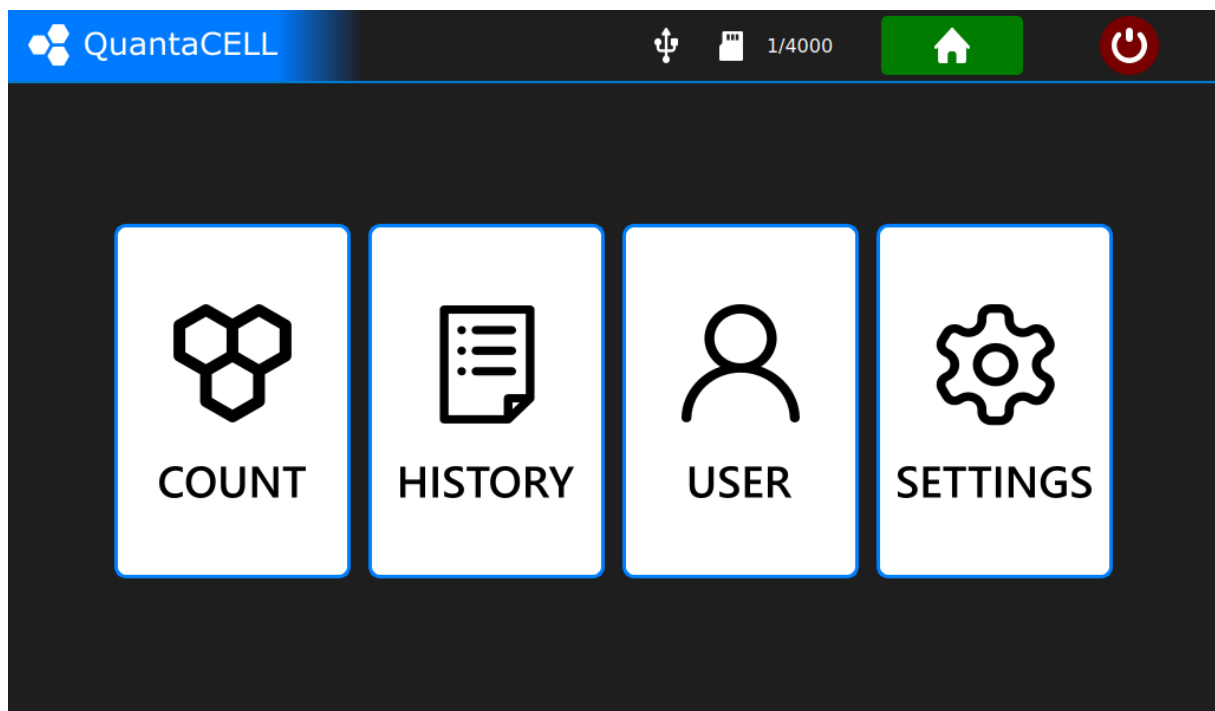
<https://youtube.com/shorts/rihQ3KbtwZI?feature=share>

The device's Start screen:



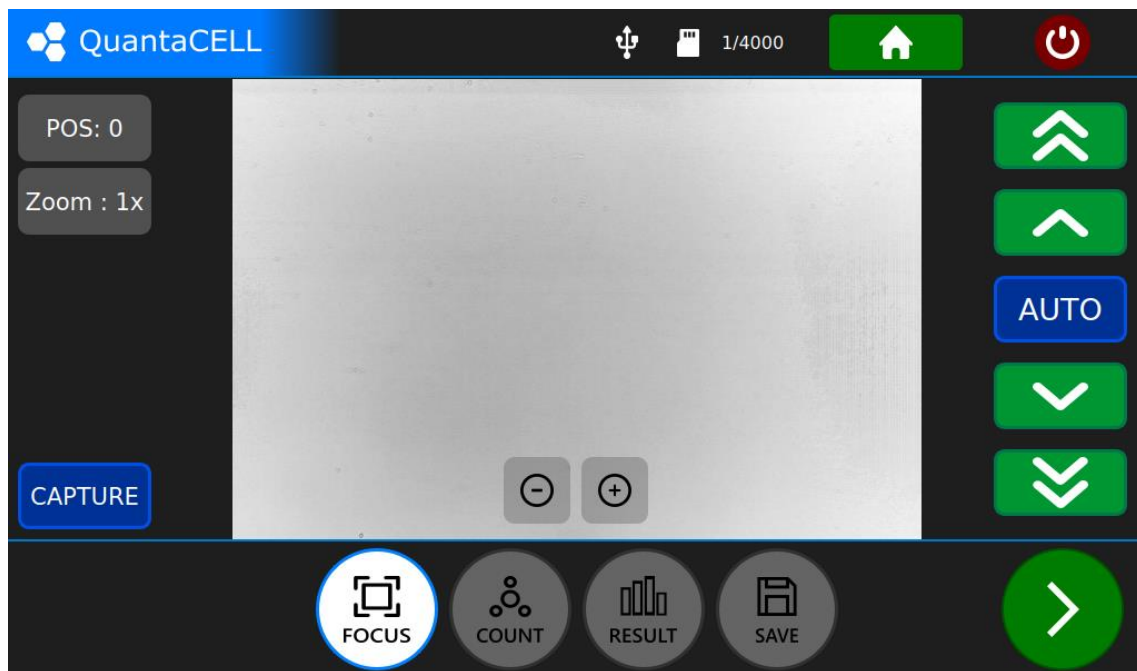
Here, the user continues according to the operation requested from the User Log in Anonymous User or Create New User buttons on the touch screen.

ANONYMOUS USER:



User will see this screen when clicking Anonymous User. If a count is to be made, the COUNT option is clicked.

COUNT:



In the interface that meets us in this part, there are some functions and outputs that we can do on the image and image.

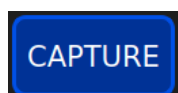


Auto focus operation

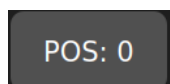


Up and down buttons for coarse focus adjustment in the camera image.

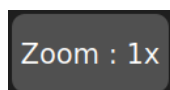
Up and down buttons for fine adjustment of the focus of the camera image.



Provides the function of recording the image that the camera is currently taking.

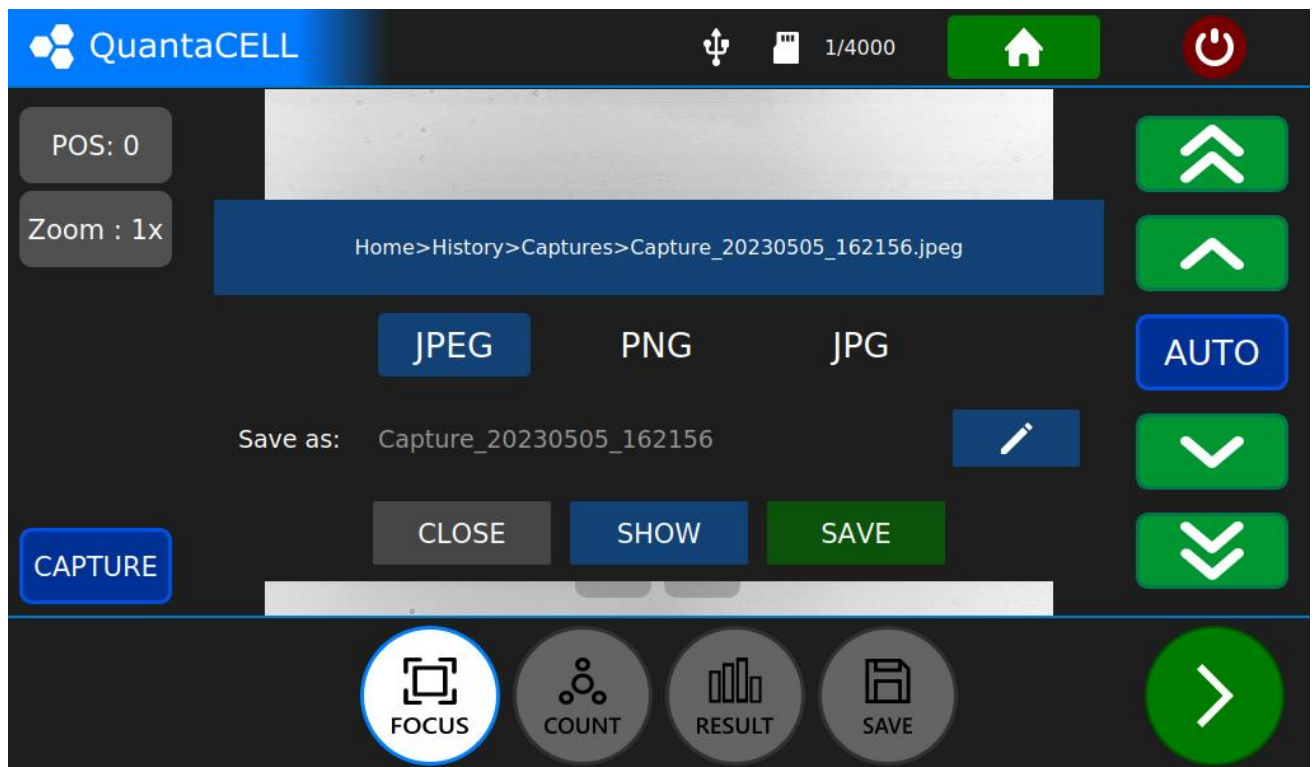


The part where the position information is reflected while providing downward and upward movement.



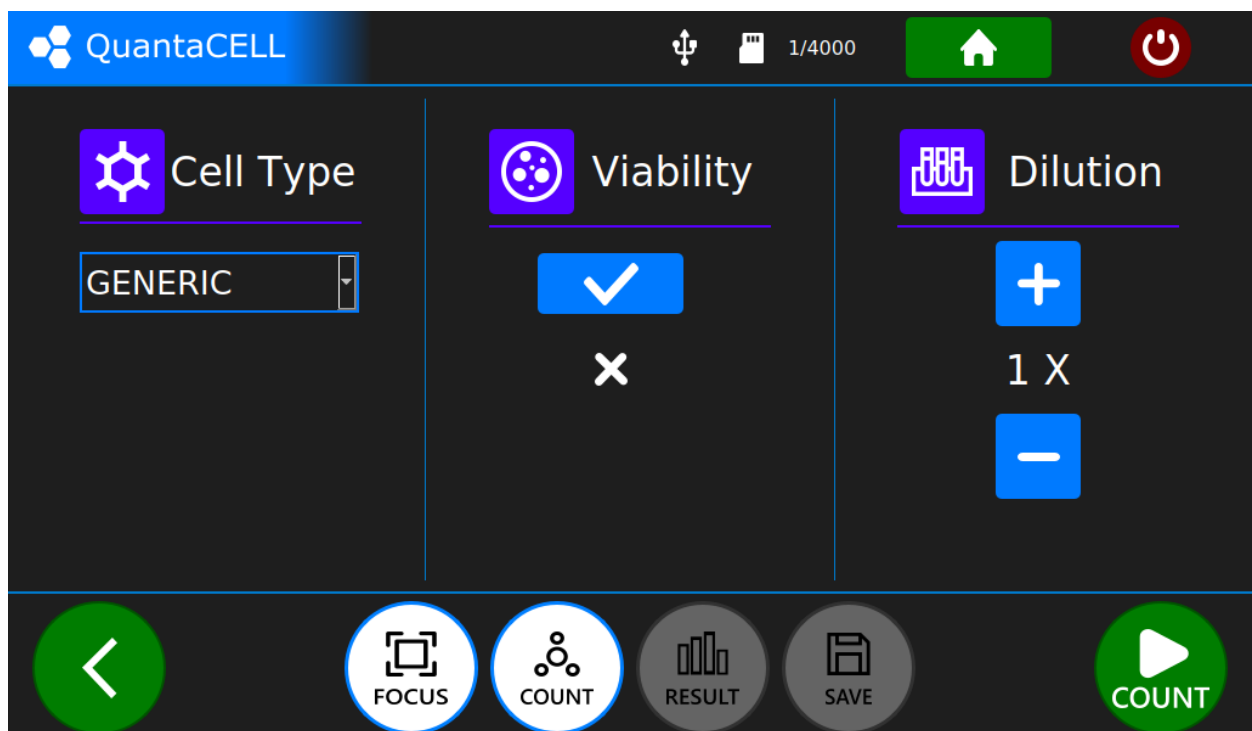
The part of the image that shows the zoom level of the cells.

CAPTURE:



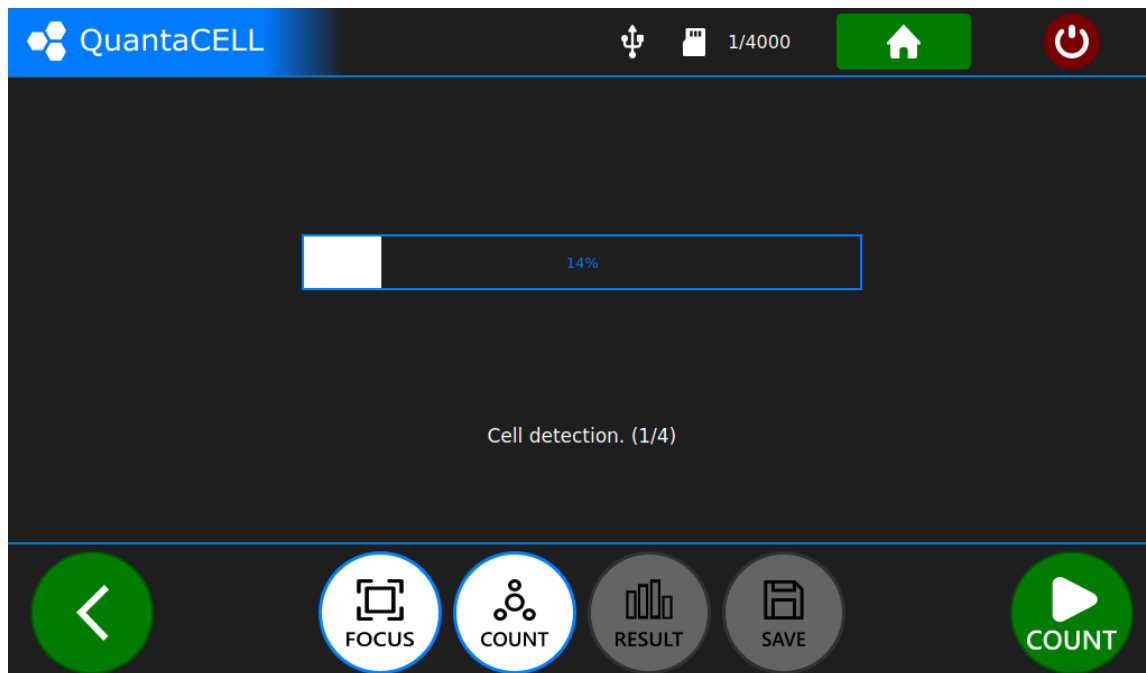
CONTINUE:

We enter the properties for the analysis that we do during the counting process.



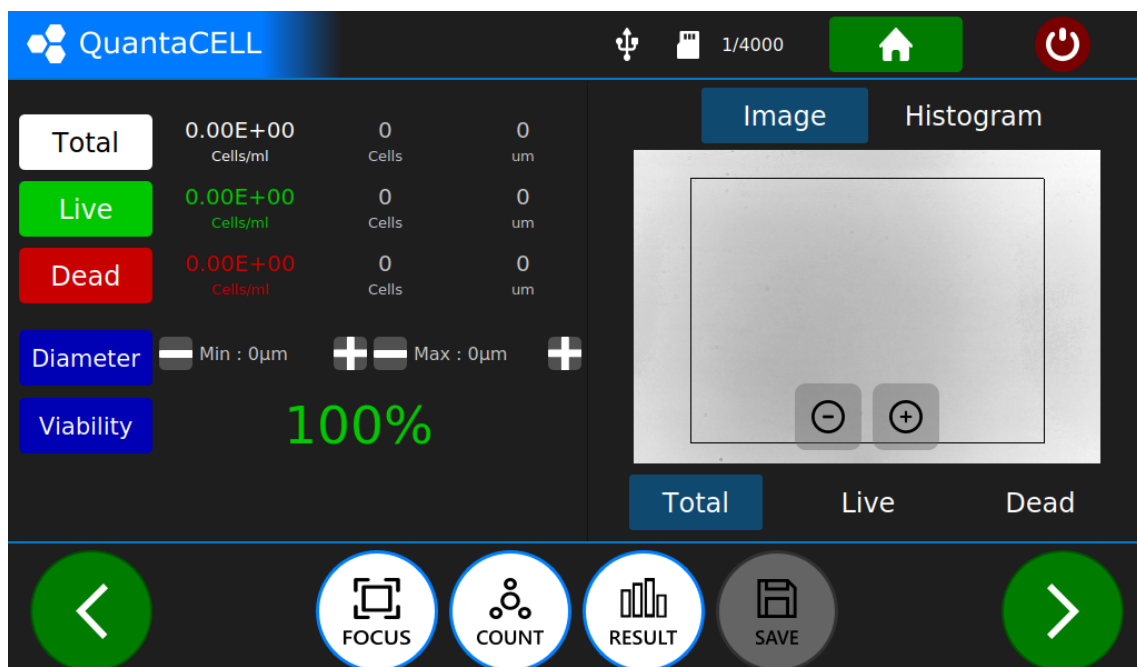
## PROGRESS:

We follow the analysis process from the bar below.



## RESULT:

The result of the analysis process will look like the following.

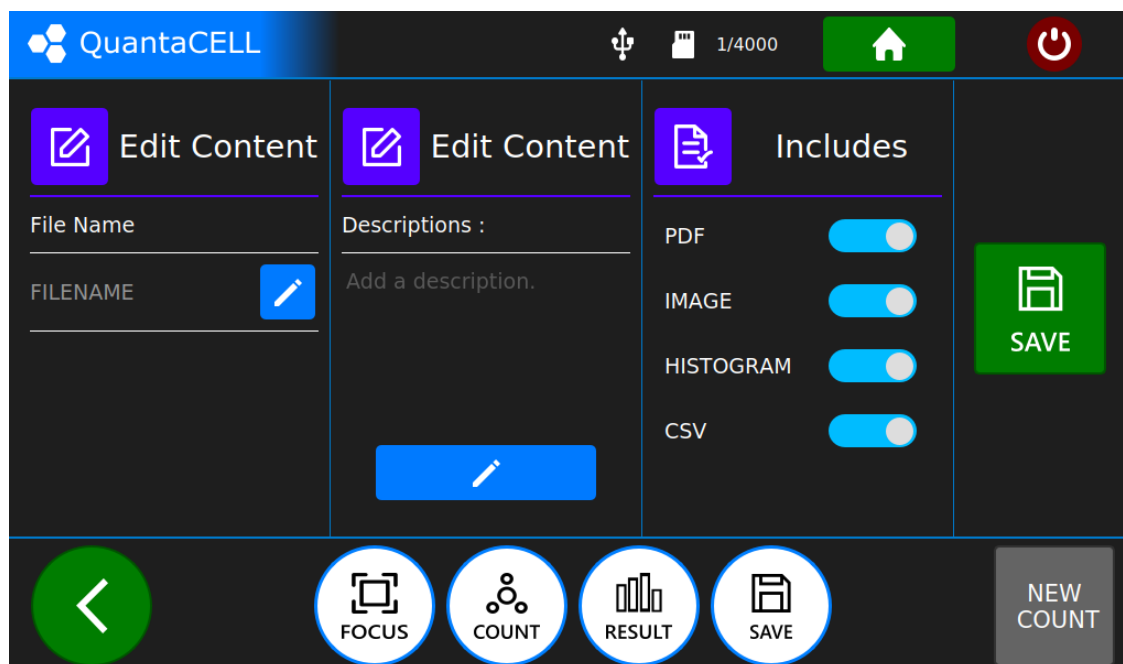






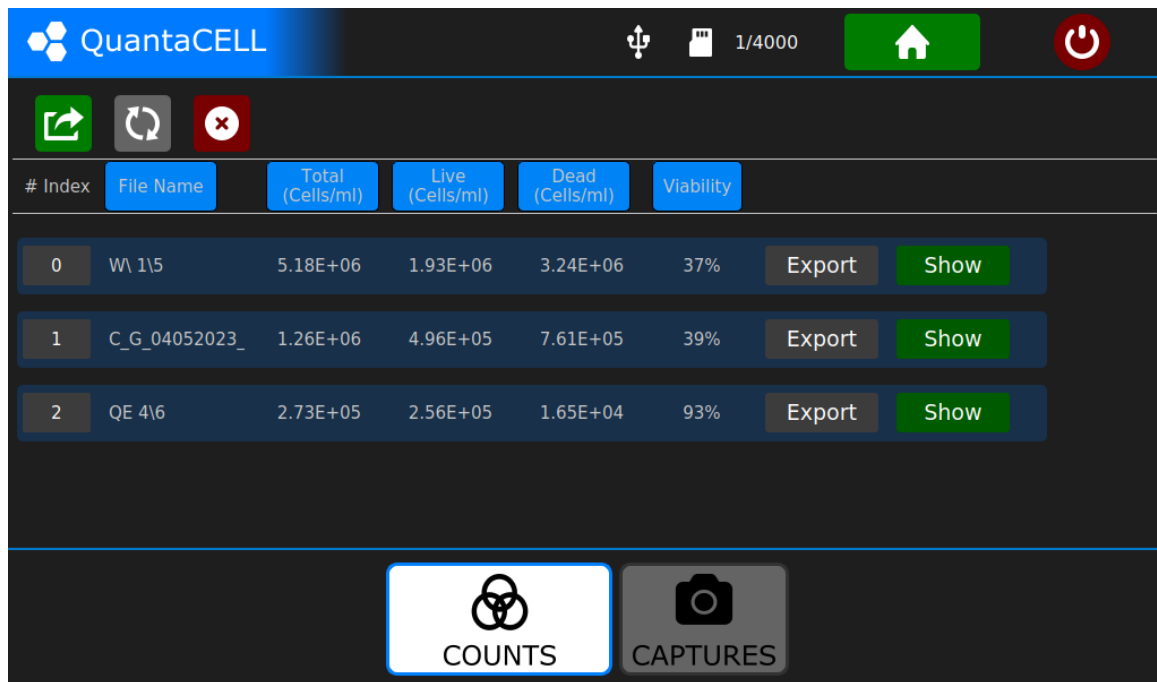
From here we can visualize the cells we want to examine according to their diameters in the least and most of them.

At the end of the analysis process, the following interface to save the analysis welcomes us. From here, the desired inputs are entered and output is taken in the desired format. If a new count is to be made, the NEW COUNT option is selected and the main page is passed.



#### HISTORY:

Click on HISTORY to see the saved images. In this section, the total living and inanimate densities of the cells in the recorded images and the percentages of vitality are listed. With the buttons at the top, multiple deletion and export operations are performed.



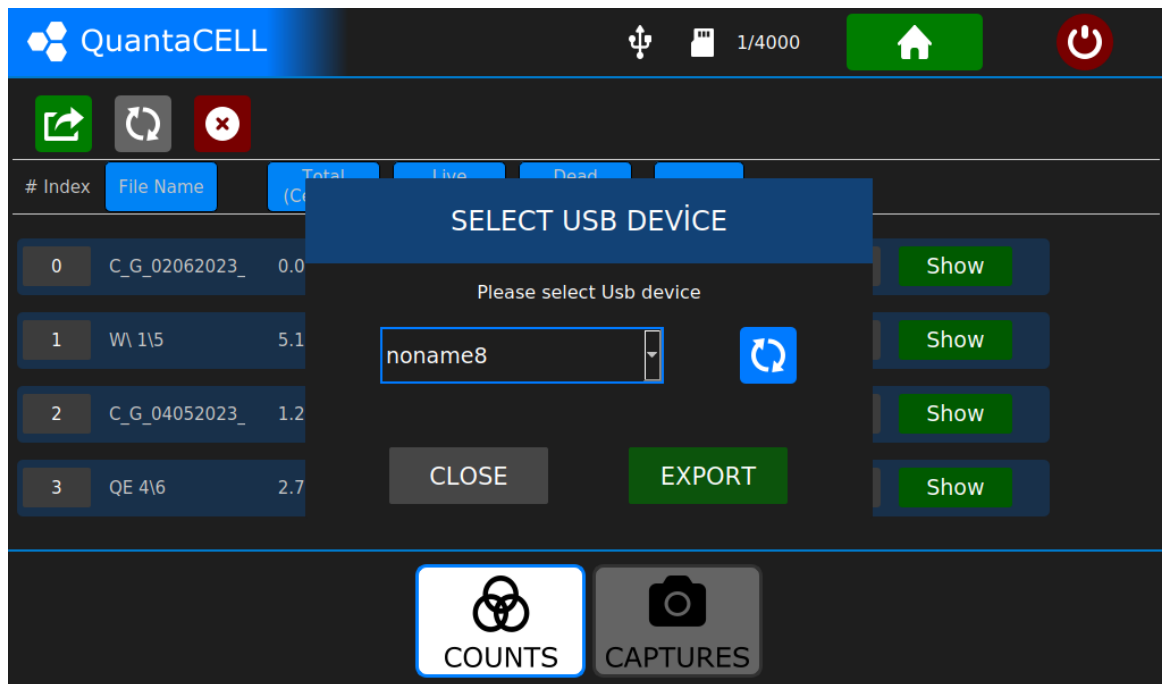
SHOW:

When the Show button is clicked, we examine the result of the recorded analysis as follows:

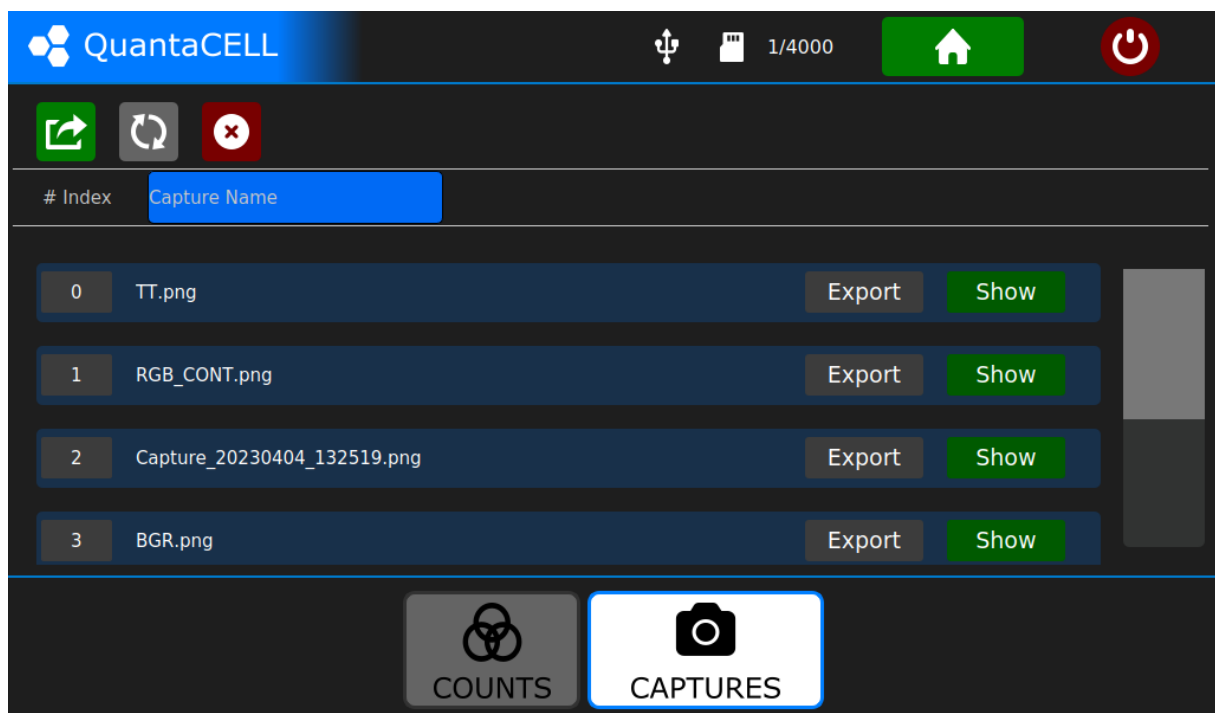


EXPORT:

In the Export option we encounter an interface as shown below and the transfer to the USB that is plugged in can be performed.

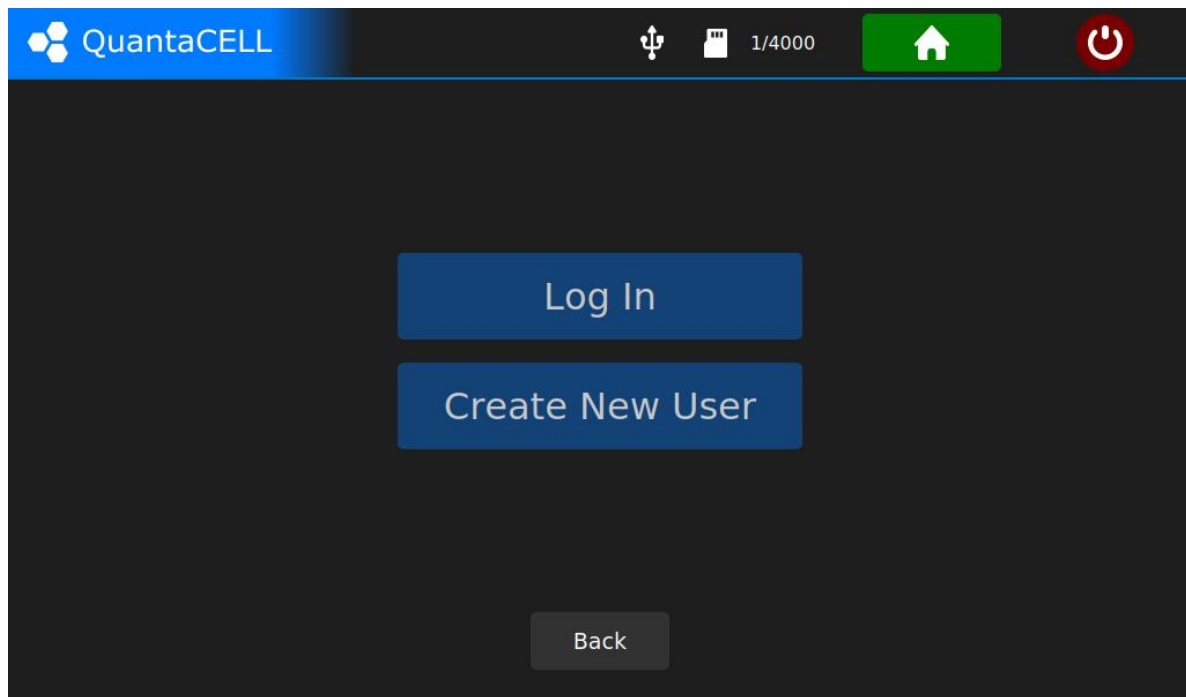


In the Capture section, there is a list of images of cells that have been taken in a similar way.



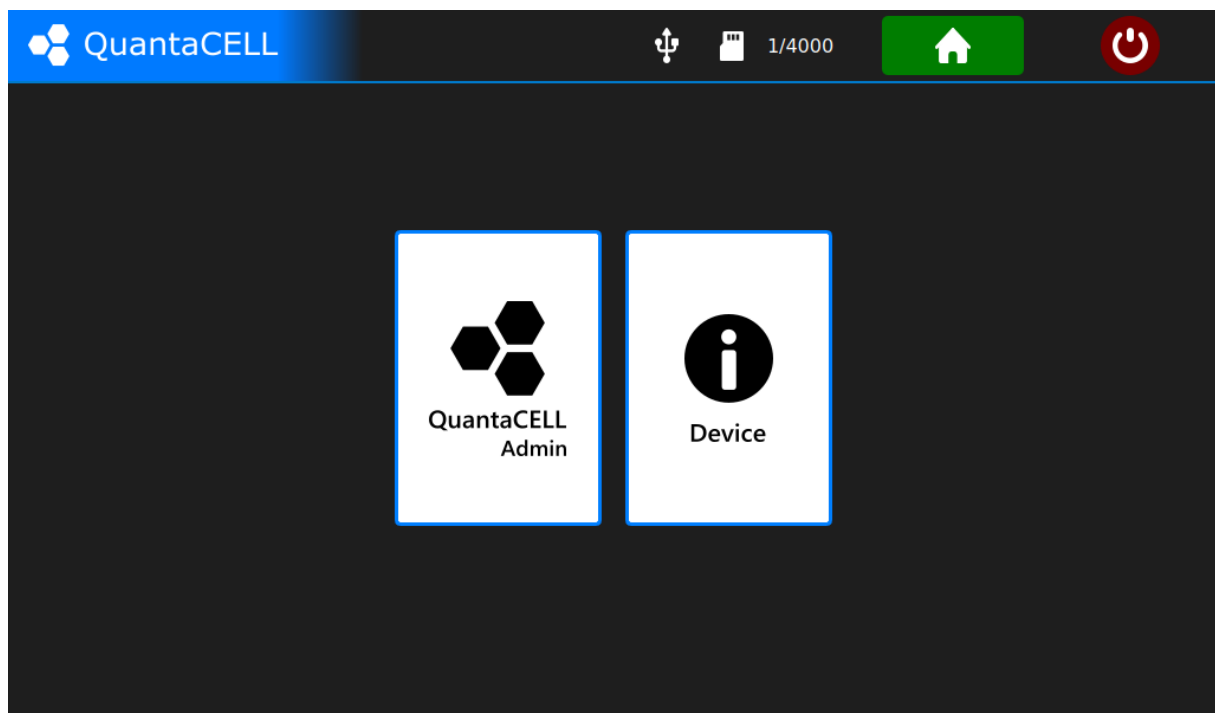
USER:

If we select the User option, in the interface the user will be asked to log in or create an account. From here, the user can get special access to the device with the account he has created and make his own counts.

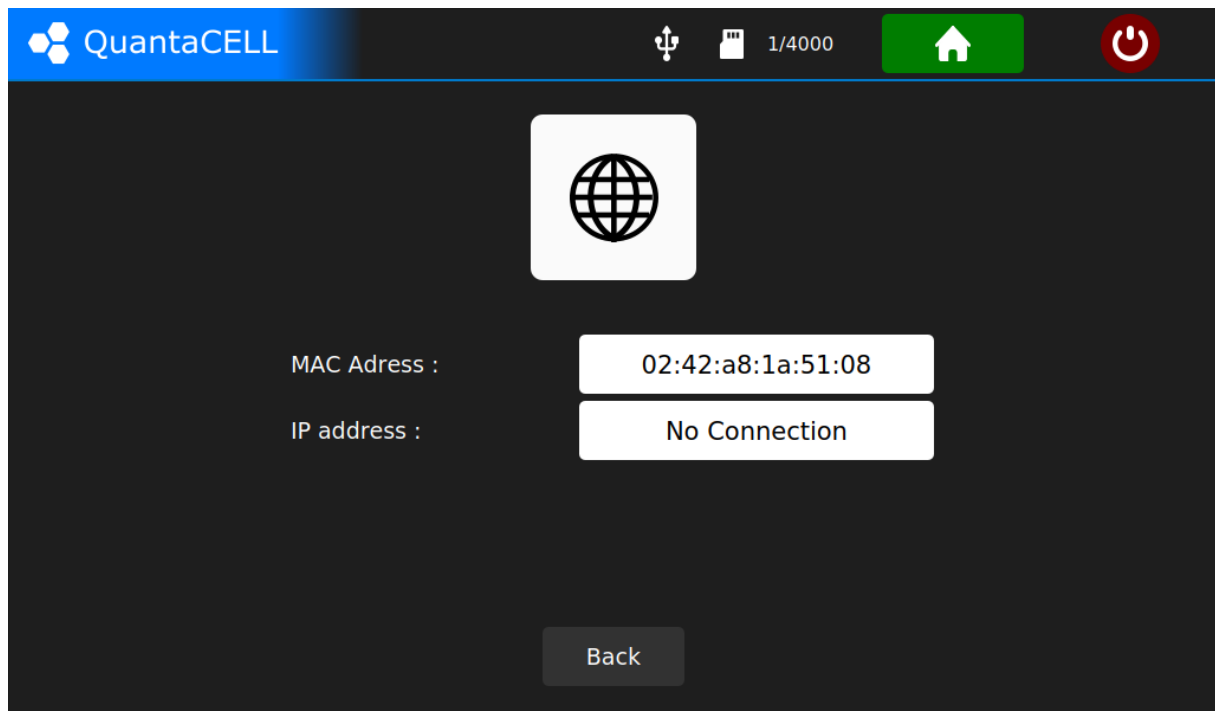


## SETTINGS:

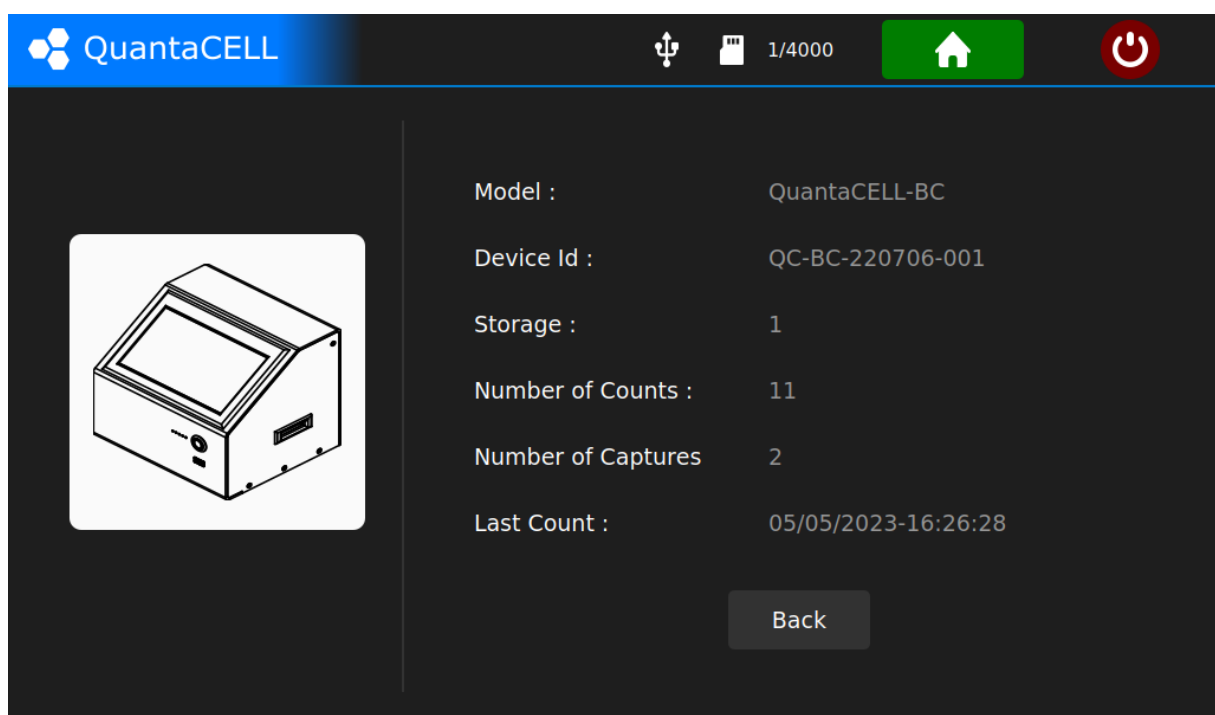
In the Settings option it shows us the Admin and Device options related to the device.



In the admin part it offers us the connection information to connect to the device from the desktop and review the images from there.



The Device section shows the device's information as shown below.



### 3. Help

Contact:

E-mail: [info@optofil.com.tr](mailto:info@optofil.com.tr)

Phone: +90 554 184 18 28