



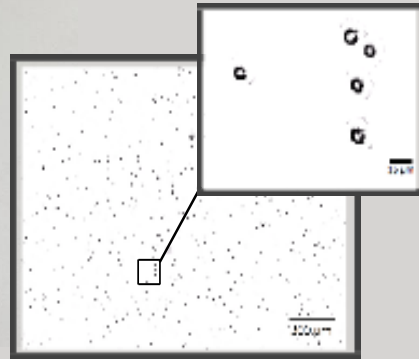
# QuantaCell 2.0

## Automated Cell Counter

QuantaCell is an automated cell counter that you can easily use in your laboratory with its small, fast, user-friendly solutions and clear user interface. With its unique optical design and image processing algorithm, QuantaCell is able to measure cell concentration, cell size distribution and viability rate.

## HIGH RESOLUTION

QuantaCell offers a high accuracy rate with its 8 MP camera and a large viewing area of 3.18mm x 2.5mm.



Maya Hücresi

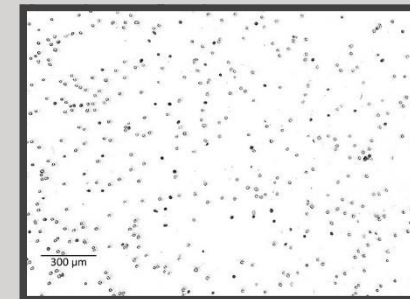
## COUNTING CHAMBER

QuantaCell is compatible with reusable counting chambers(Thoma chamber, Neubauer chamber, Bürker chamber, Turk chamber, Zappert chamber, etc.).

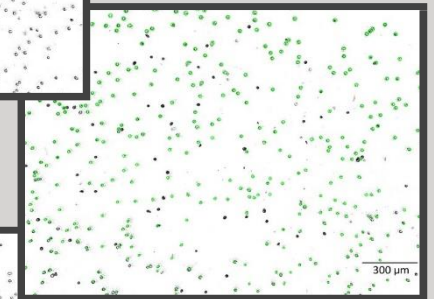


## VIABILITY ANALYSIS

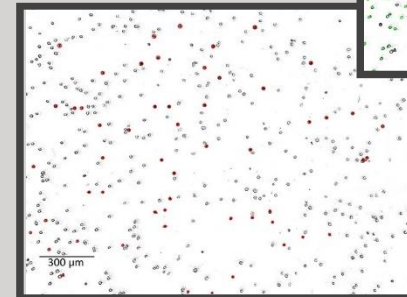
QuantaCell is able to analyze cell viability with staining. As a result of this analysis, total cell concentration, live cell concentration, dead cell concentration and viability rate values are automatically calculated.



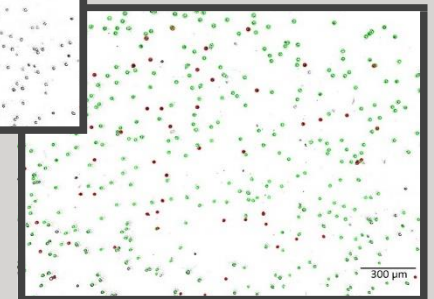
Normal cell image



Segmented and detected live cells



Segmented and detected dead cells



Segmented and detected live and dead cells

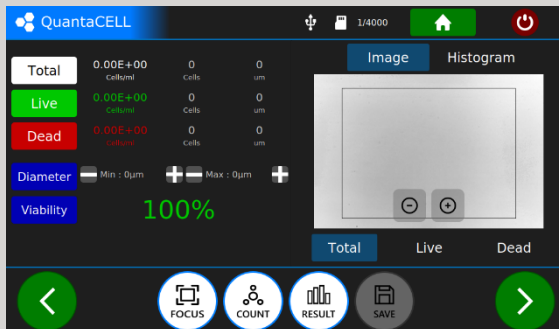
# FEATURES

- Cell Count
- Cell viability rate measurement
- Reusable counting lane
- Quick Result
- High Accuracy
- High Resolution
- Motorized Focus
- Lightweight, Portable Design
- Easy User Interface

<b>Cell Count Time</b>	<5 second
<b>Cell Concentration Range</b>	$3 \times 10^5$ - $1 \times 10^7$ cell/ml (The range can be expanded by dilution)
<b>Cell Size Range</b>	5- 90 $\mu$ m
<b>Cell viability range</b>	0- 100 %
<b>Image Resolution</b>	8 MP
<b>Image Area</b>	2.2mm x 1.6 mm

<b>Counting Chamber</b>	Reusable counting chambers
<b>Application Software</b>	QuantaCell software using embedded computers and artificial intelligence
<b>Report Format</b>	.JPEG, ptc, .txt, .csv
<b>Dimensions</b>	Height: 20 cm, Width: 17,5 cm, Height: 19 cm
<b>Weight</b>	3,5 kg
<b>Device Outputs</b>	USB port
<b>Device Login</b>	12V DC 500mA

## EASY INTERFACE



Contact:

E-mail: [info@optofil.com.tr](mailto:info@optofil.com.tr)

Phone: +90 554 184 18 28

OPTOFIL